



West Linn – Wilsonville Schools

LONG RANGE PLANNING COMMITTEE

AGENDA

July 31, 2012
7:00 pm, Board Room

1. Check-In
2. 2nd Quarter 2012 Bond Financial Report (draft attached)
3. Bond Activity Report
 - a. New School Completion
 - b. Summer Projects (status report-attached)
4. Long Range Plan
 - a. Keith Metro report (attached)
 - b. Next steps?
5. Meeting Calendar/Work Schedule (attached)
6. Anything else?

Next LRPC Meeting: Tuesday, August 28, 2012 at 7:00 pm Board Room

Department of Operations

Mail: P.O. Box 35 • West Linn, Oregon 97068 • 503-673-7995 Fax 503-638-9143 • www.wlww.k12.or.us
Location: 2755 SW Borland Road, Tualatin, Oregon 97062

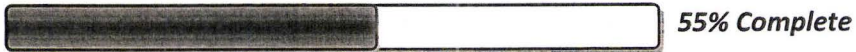


West Linn – Wilsonville School District

Summer 2012 Projects

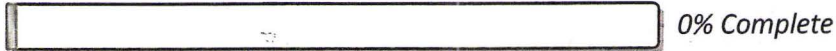
Updated 7/27/12

- Summer

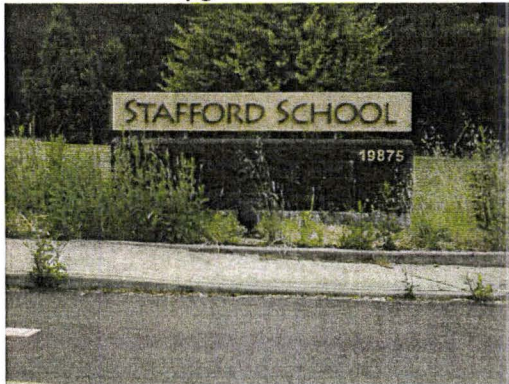


Amount complete of the summer.

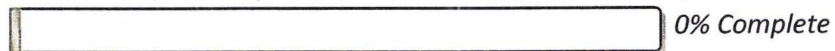
- Reader Board at Stafford



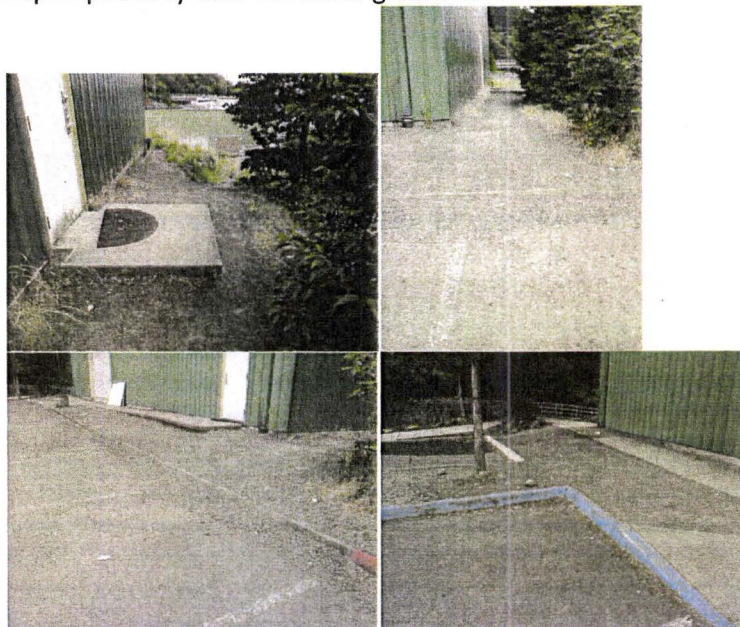
Reader board upgrades at the front of the school.



- Sidewalk/Pathway at WLHS East Batting Barn (\$2,456)



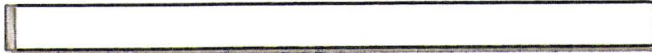
Repair pathway near the batting barn at WLHS.





West Linn – Wilsonville School District

- Eagle Scout Project at WLHS

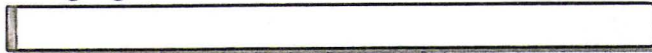


0% Complete

Put in benches around the new Boones Ferry playground.



- Big Dig at WLHS



0% Complete

Put in additional catch basins and a natural flow path along the back of the school to alleviate the flooding and clogging of the existing pipe from high water levels.





West Linn – Wilsonville School District

- Planter Retaining Wall at West A St Staff Parking at WLHS (\$17,820)



0% Complete

Put in a 3' retaining wall adjacent to the staff parking lot at the front of the school.



- Refurbish Athletic Fields at Inza Wood (\$34,361)



100% Complete

Rebuild the fields to flatten and smooth them out while creating a consistent grade.

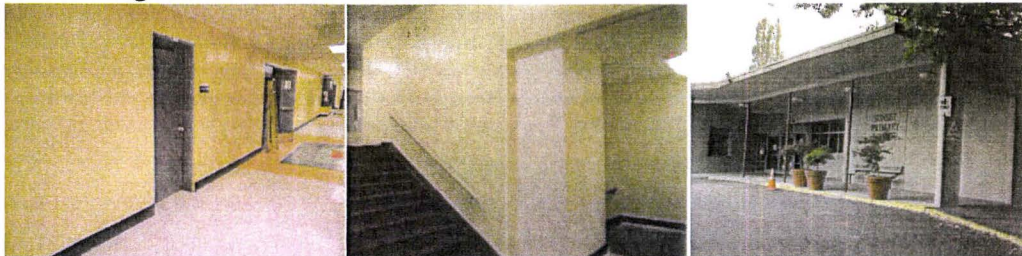


- Paint Sunset (\$63,570)



80% Complete

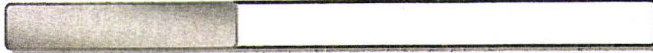
Paint throughout the interior of the school.





West Linn – Wilsonville School District

- Paint WLHS Stadium (\$6,230)



35% Complete

Clean up and paint all structural steel and sheet metal panels dark as well as the retaining wall below the seating with a dark green background and lettering reading 'HOME OF THE LIONS'.

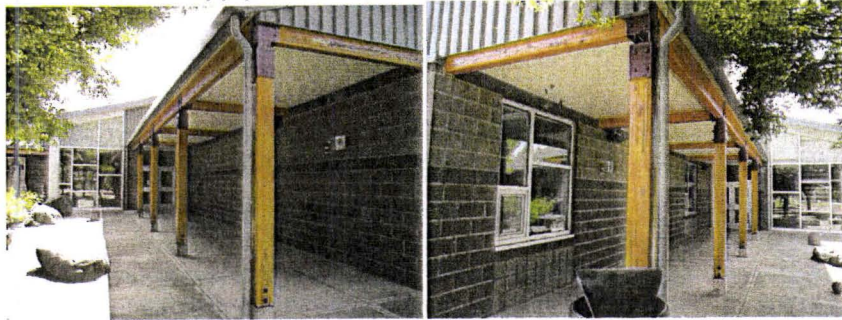


- Refinish Columns at Boones Ferry (\$4,335)



100% Complete

Sand down and apply new varnish to the wood while painting the connections.



- Paint Steel at Rosemont Ridge (\$32,300)



100% Complete

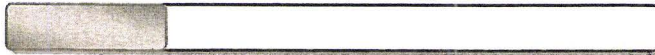
Clean up and paint all exterior deteriorating steel.





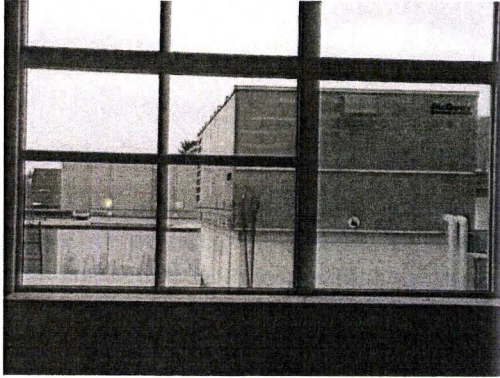
West Linn – Wilsonville School District

- New HVAC at WLHS Commons (\$98,179)



25% Complete

Replace HVAC unit above the entry/commons area.



- Control Computer (IBEX) at 6-schools



100% Complete

New computer and program purchase and install at multiple schools.

- Reside Boeckman Creek-Phase 1, 2, and 3 (\$99,370)



55% Complete

Remove and replace siding around the school in three different stages. The new siding will then be painted the original color matching the school.



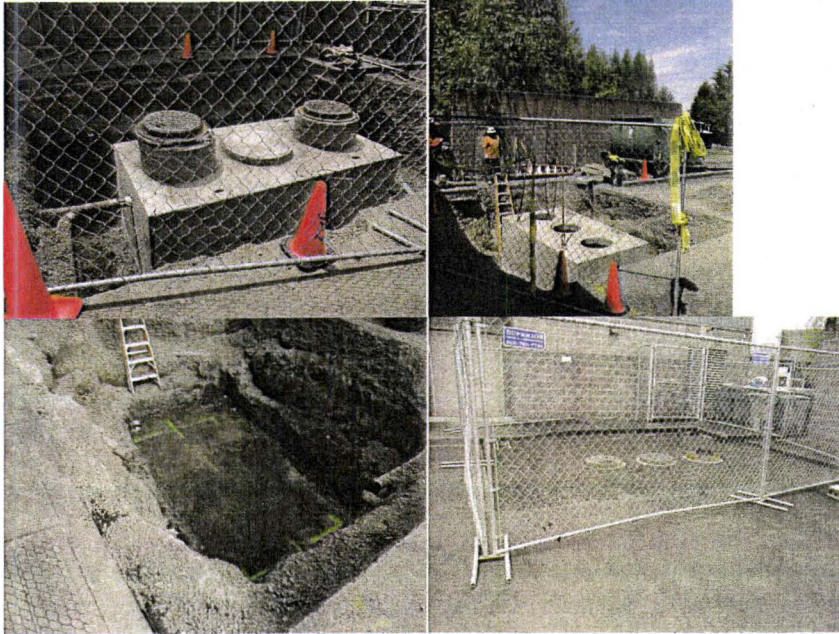


West Linn – Wilsonville School District

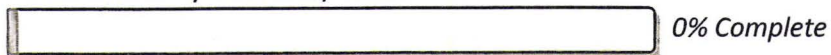
- Grease Interceptor at Boones Ferry (\$23,775)



Dig up and examine leaking grease trap to then replace grease trap.



- Resurface Gym at Athey Creek



Resurface gym floor.



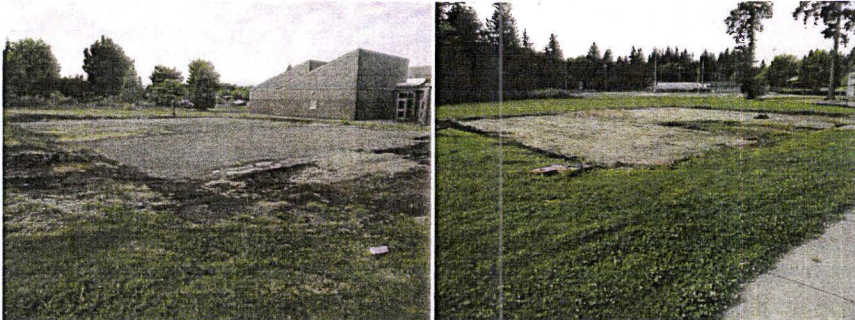


West Linn – Wilsonville School District

- Remove Portables at Boeckman and Boones Ferry (\$8,196)

 100% Complete

Remove portables at both schools.




- Drainage at Cedaroak Park (\$168,470)

 60% Complete

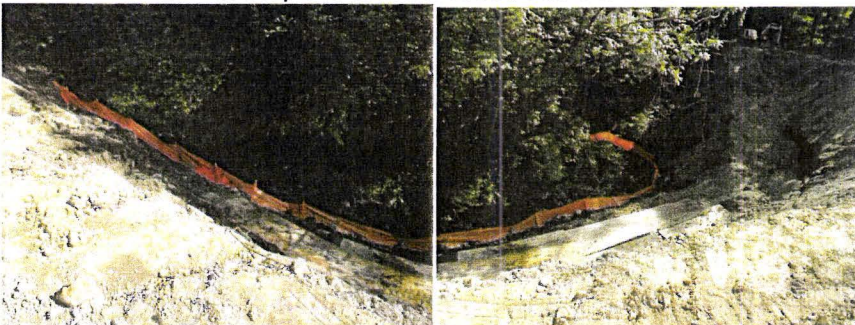
Drainage upgrades in the back of the school.



- Bank Stabilization at Bolton (\$149,750)

 60% Complete

Stabilize the bank to stop the erosion of soil into the river.





West Linn – Wilsonville School District

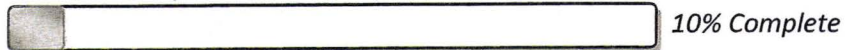
- Trash Compactor at Bolton (\$19,975)



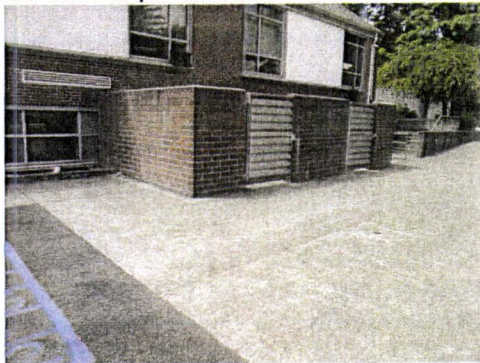
Install trash compactor.



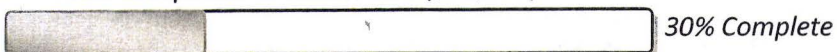
- Trash Compactor at Sunset (\$19,975)



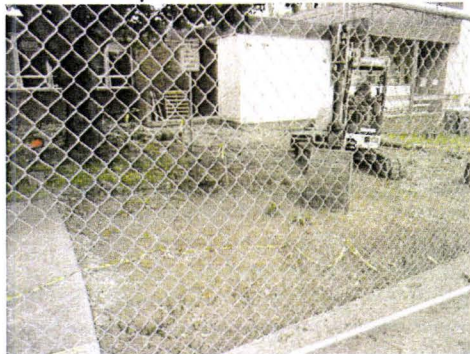
Bid out the procurement and installation of the trash compactor.



- Trash Compactor at Willamette (\$19,975)



Bid out the procurement and installation of the trash compactor.





West Linn – Wilsonville School District

- Willamette Improvements (\$290,342)

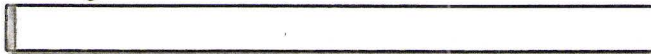


45% Complete

Exterior Improvements around the back side of the school.



- Pergola Construction at Sunset



0% Complete

Pergola and work along the property line next to the park.



- Gates at Dollar St (\$2,537)



80% Complete

Install gates around access points around Dollar St property.





West Linn – Wilsonville School District

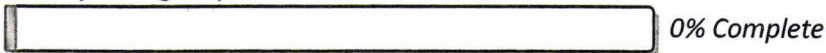
- Rock Barrier at Dollar St



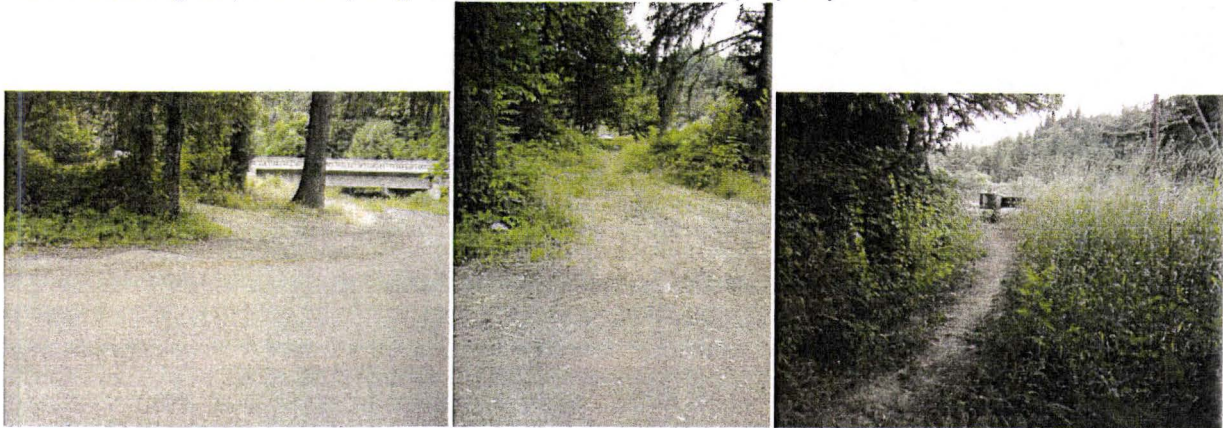
Put in a rock barrier at an access point at the Dollar St. property.



- City Emergency Drive at Dollar St



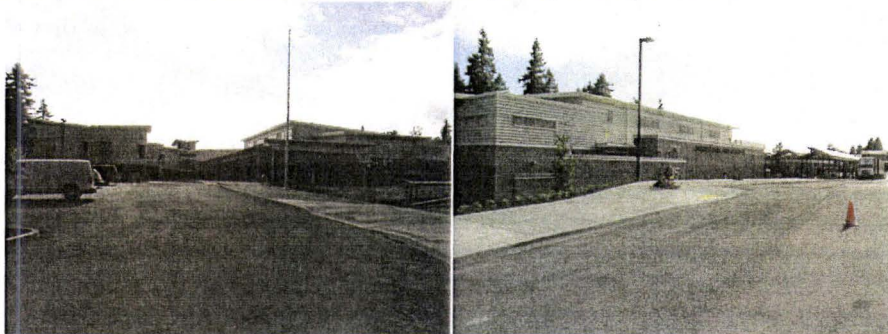
Put in an emergency driveway to gain access around Dollar St property.



- Trillium Creek (\$15,627,972.90)



Complete the school to be ready for occupancy and operation.





West Linn – Wilsonville School District

- Lowrie (\$15,469,609.00)



85% Complete

Complete the school to be ready for occupancy and operation.



- Furnish the 2 New Schools



95% Complete

Supply and install furniture for both new schools.

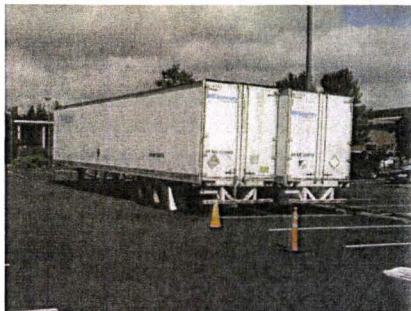


- Move Teachers



50% Complete

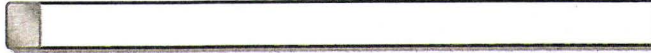
Move teachers into the two new schools and move them within existing buildings as well.





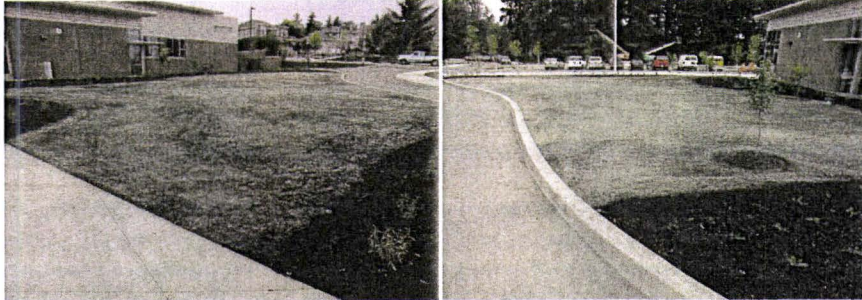
West Linn – Wilsonville School District

- Learning Garden at Trillium Creek (\$47,000)



5% Complete

Separate contract to do the learning garden at the school.



- Learning Garden at Lowrie (\$50,000)



5% Complete

Separate contract to do the learning garden at the school.

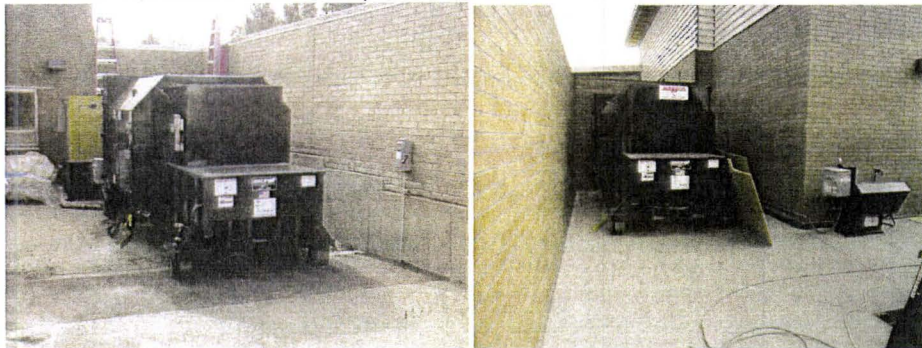


- Buy/Install Trash Compactors at Both New Schools (\$29,112)



100% Complete

Purchase and install trash compactors at the new schools.



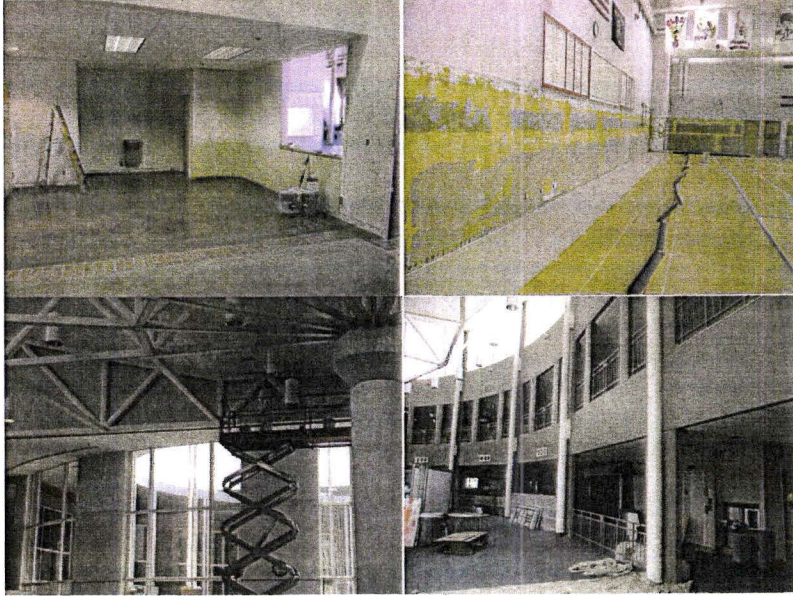


West Linn – Wilsonville School District

- Improvements at Athey Creek (\$149,800)



Interior improvements and renovation to the school.



- Improvements at Stafford (\$56,000)



Interior improvements around the school.



- Abatement at Stafford



Remove asbestos in the annex.





West Linn – Wilsonville School District

- Abatement at Willamette



0% Complete

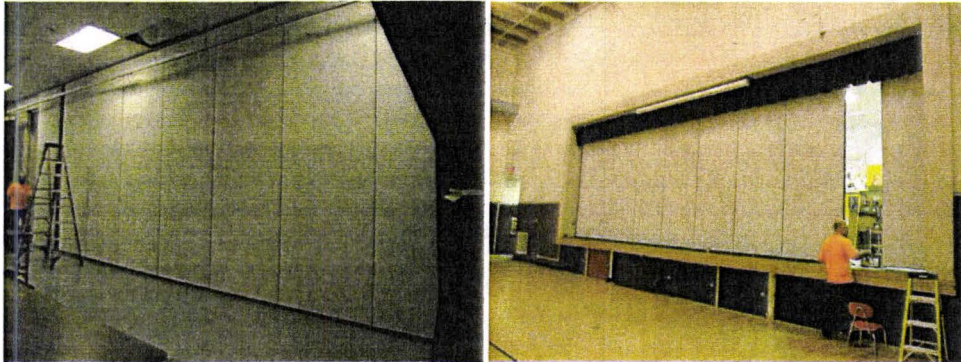
Asbestos abatement around the school.

- Repair Stage Doors at Willamette (\$11,722)



100% Complete

Resurface stage doors as well as the wall next to the location where doors get moved and stored.



- Entry Walk-Off at Willamette (\$3,600)



100% Complete

Install heavy duty entry carpeting going out to the playground.



- Score Keepers Table at WLHS (\$1,720)



100% Complete

New score keepers table.

- Score Keepers Stools at WLHS (\$1,800)



50% Complete

New score keepers stools.



West Linn – Wilsonville School District

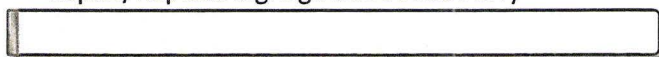
- Parking Lot Design/Permit at WLHS (\$93,985)



50% Complete

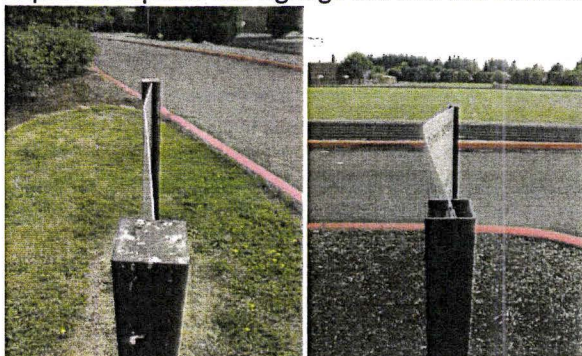
Get the drawings and permit to be able to start the rebuild of the parking lot.

- Repair/Replace Signage at Boones Ferry

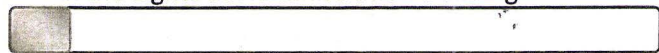


0% Complete

Repair or replace the signage around the exterior of the school.

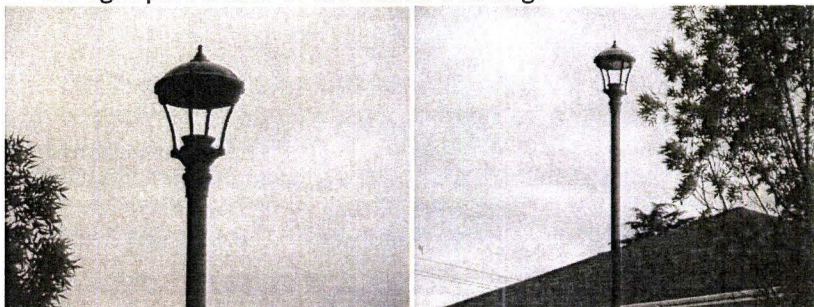


- Fix the Lights at Administration Building

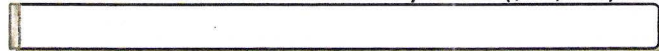


10% Complete

Fix the light pole issues at the admin building.

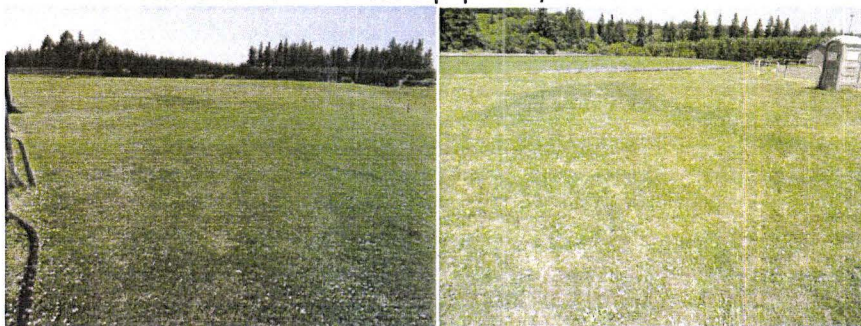


- Outdoor Fitness Install at Athey Creek (\$12,490)



0% Complete

Build out a base and install fitness equipment/structure.





West Linn – Wilsonville School District

- Pre-School Playground at Boones Ferry (\$40,000)



25% Complete

Build an asphalt path, like a race track, to surround bark chips and a play structure in the location of the removed portable.



- Corrective Drywall Warranty Work at Cedaroak Park



90% Complete

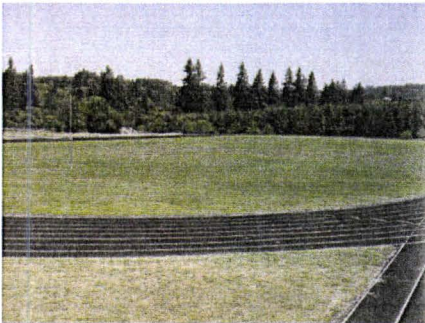
Repair drywall work from previous three school project at Cedaroak Park.

- Fields at Athey Creek (\$2,812)



100% Complete

Rebuild the fields to flatten and smooth them out to a consistent grade.



- WLHS Locker Room Floor (\$50,000)



0% Complete

Demo and replace the flooring in the boy's locker room.





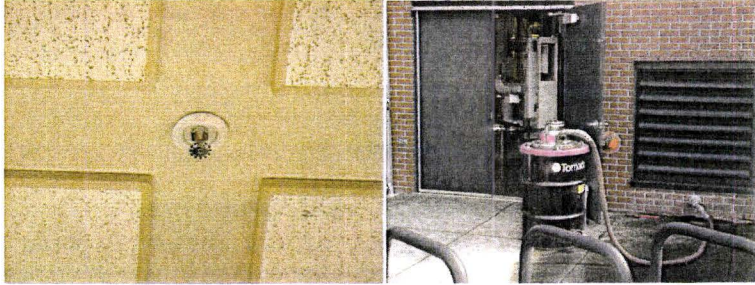
West Linn – Wilsonville School District

- Sprinkler Heads at Rosemont Ridge (\$27,232)



100% Complete

Replace all sprinkler heads throughout the school.

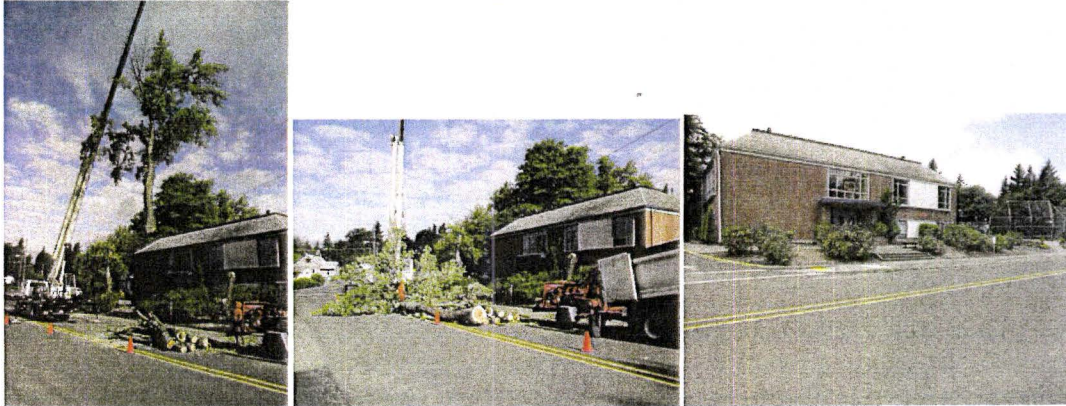


- Tree Removal at Sunset (\$1,750)



100% Complete

Remove three large, hazardous trees and grind down their stumps in front of the school.



Tim Woodley - LRPC

From: "Liden, Keith S." <Liden@pbworld.com>
To: Tim Woodley <Woodleyt@wlwv.k12.or.us>
Date: 07/31/2012 9:05 AM
Subject: LRPC
CC: Amy Berger <BergerA@wlwv.k12.or.us>

Tim,

Forgot to indicate that I have a conflict for tonight's LRPC meeting. The only thing I would have to report is that Metro is continuing work on long-range forecasts for households and employment in the region. Forecasts to 2025 have been completed (more or less) and the effort is now looking at 2035-45. Draft figures are being circulated to local governments, and they currently have until August 17th to respond/suggest amendments. Lead local reviewers should be Dan Pauley - Wilsonville, Larry Conrad - Clackamas County, and I assume Chris Kerr - West Linn. As you recall, we used preliminary figures from Metro in our long range plan.

As I understand from Dennis Yee, Metro's lead analyst, the Stafford Basin continues to be controversial. I'll be checking in with the planners to find out more about the Metro forecasts and what amendments they may be requesting. Beyond August 17th the forecasts will go through the usual Metro review at TPAC, MPAC, etc., winding up before the Metro Council for adoption on Nov. 1st. Washington County asked Metro for a little more time for staff review, so this schedule could get stretched out a little.

I'll keep you posted.

Keith S. Liden, AICP
Lead Planner, PlaceMaking

Parsons Brinckerhoff
400 SW 6th Avenue, Suite 802, Portland, OR 97204
Direct: 503.478.2348/ Office: 503.274.8772
www.pbworld.com/pbplacemaking

NOTICE: This communication and any attachments ("this message") may contain confidential information for the sole use of the intended recipient(s). Any unauthorized use, disclosure, viewing, copying, alteration, dissemination or distribution of, or reliance on this message is strictly prohibited. If you have received this message in error, or you are not an authorized recipient, please notify the sender immediately by replying to this message, delete this message and all copies from your e-mail system and destroy any printed copies.



West Linn/Wilsonville School District
LONG RANGE PLANNING COMMITTEE
2012-2013 MEETING DATES

July	31	7:00 PM	District Administration 22210 SW Stafford Rd
August	28	7:00 PM	District Administration 22210 SW Stafford Rd
September	25	7:00 PM	District Administration 22210 SW Stafford Rd
October	30	7:00 PM	District Administration 22210 SW Stafford Rd
November	27	7:00 PM	District Administration 22210 SW Stafford Rd
December	18	7:00 PM	District Administration 22210 SW Stafford Rd
January	29	7:00 PM	District Administration 22210 SW Stafford Rd
February	26	7:00 PM	District Administration 22210 SW Stafford Rd
March	26	7:00 PM	District Administration 22210 SW Stafford Rd
April	30	7:00 PM	District Administration 22210 SW Stafford Rd
May	28	7:00 PM	District Administration 22210 SW Stafford Rd
June	25	7:00 PM	District Administration 22210 SW Stafford Rd